

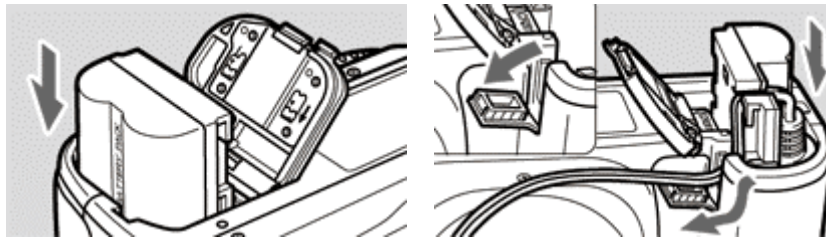
EOS 20D Firmware Update Procedure Version 2.0.3

Precautions

When the firmware update operations are finished, turn the camera off and remove battery from the camera for more than two seconds. This will cause the new firmware to take effect after the battery has been reloaded and the camera is turn on.

When performing the operations described below, do so after removing the lens from the camera.

Use a fully charged Battery Pack BP-511A/BP-514 or dedicated AC Adapter Kit (Optional) ACK-E2 for the firmware update.



Do not shut off the power during the firmware writing operation. A power failure during the firmware writing operation may disable the camera.

Do not open the CF card slot cover or press any camera buttons during the firmware writing operation.

EOS 20D firmware update procedures

Note: In the steps that follow, "x.x.x" refers to the version of the firmware prior to the update.

(1) Download the firmware update file from Web Site.

Please download the compressed, self-extracting file that matches your computer's operating system.

Windows



Double-click the downloaded "eos20d203.exe" file.

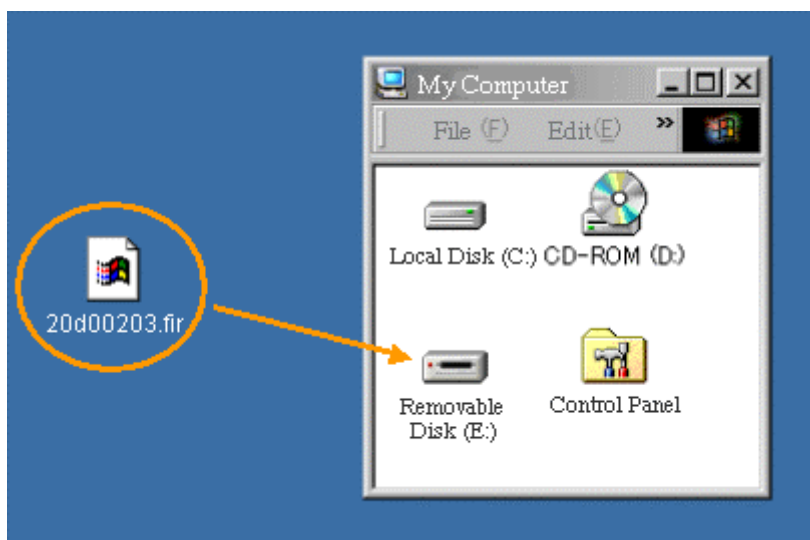


Clicking "OK" will cause the file's contents to be extracted and the firmware update file "20d00203.fir" to be created. (Click "Browse" to select a destination for the extracted files. This destination may be different from the path initially displayed, "C:")

The firmware update file "20d00203.fir" will take up 8.09MB(8,493,110 bytes) of disk space when created. You can confirm this by right-clicking the icon and selecting the Properties command from the pop-up menu that appears.

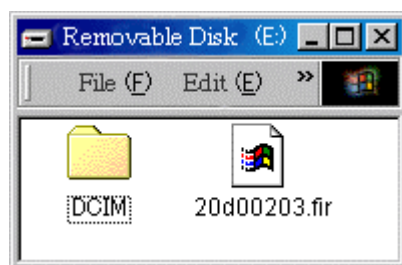
If the file size differs from the above, please download the file again from the Web site. Also, firmware updating service is provided free of charge at Canon Service Centers.

Copy the firmware update file "20d00203.fir" via a card reader to a CF card that has been formatted in the EOS 20D.



The drive letter (E:) may be different on your system.

Double-click the CF card icon ["Removable disk (E:)"].

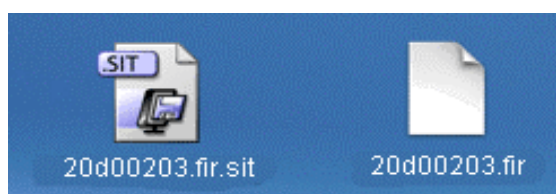


Remove the CF card from the card reader after confirming that the firmware update file "20d00203.fir" has been saved to the card.

*When removing the CF card, be sure to do so as described in the documentation for the computer or the card reader.

Macintosh

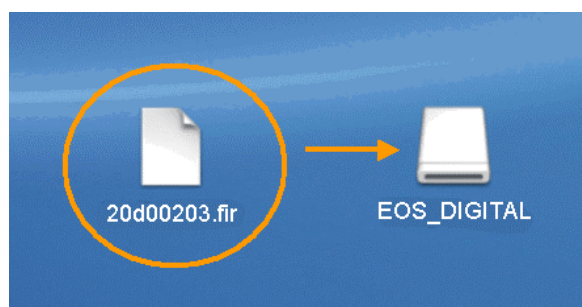
The downloaded file "20d00203.fir.sit" will automatically self-extract, creating the firmware update file "20d00203.fir".



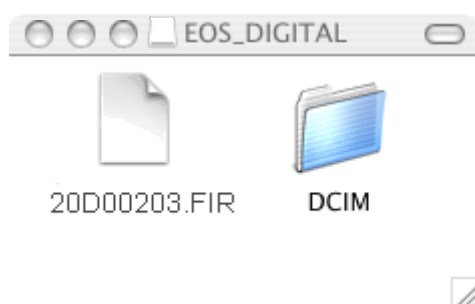
The firmware update file "20d00203.fir" will take up 8.1MB(8,493,110 bytes) of disk space when created. To check the file size, select the icon, and then select the Get Info command from the File menu.

If the file size differs from the above, please download the file again from the Web site. Also, firmware updating service is provided free of charge at Canon Service Centers.

Copy the firmware update file "20d00203.fir" via a card reader to a CF card that has been formatted in the EOS 20D.



Double-click the CF card icon ["EOS_DIGITAL"].



Remove the CF card from the card reader after confirming that the firmware update file "20d00203.fir" has been saved to the card.

*Before removing the CF card from the card reader, select the EOS_DIGITAL icon, and then choose Eject EOS_DIGITAL from the File menu (or drag the EOS_DIGITAL icon to the Trash).

*Copy the firmware "20D00203.fir" in the computer on the CF card.

*Please the firmware file in the root directory of the CF card. If the firmware file is placed in a subfolder of the CF card, the EOS-20D will not see it.

(2) Insert the CF card with the firmware into the camera and turn the Main Switch on.

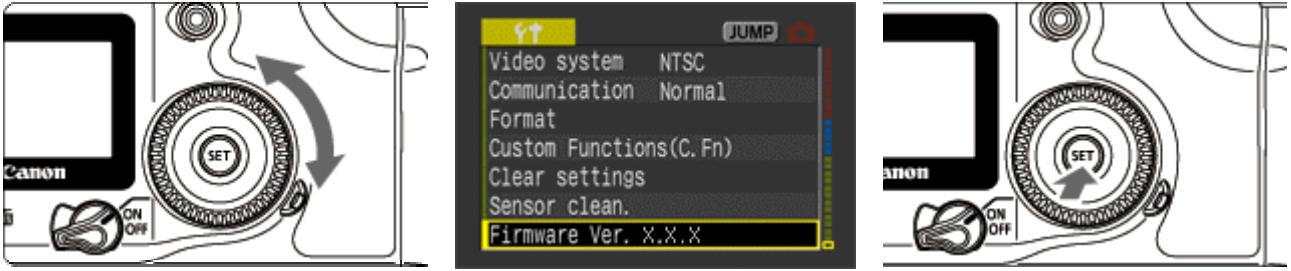


Rotate the mode dial to P mode (or one of the other modes in the creative zone).

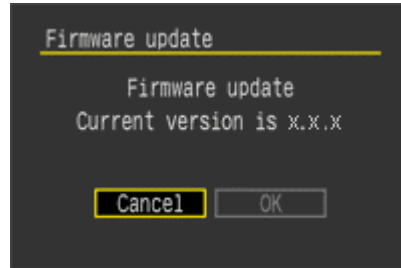
Turn the camera ON, and then press the "MENU" button to display the menu.

(3) After selecting "Firmware Ver.x.x.x", press the "SET" button.

Rotate the Quick Control Dial to select the "Firmware Ver.x.x.x" item at the bottom of the Set-up menu (Yellow).



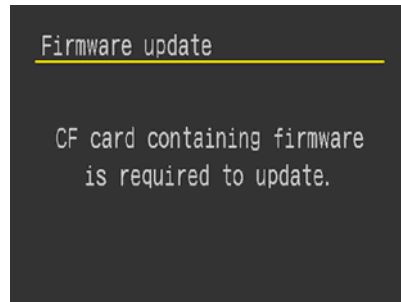
The firmware update screen will appear.



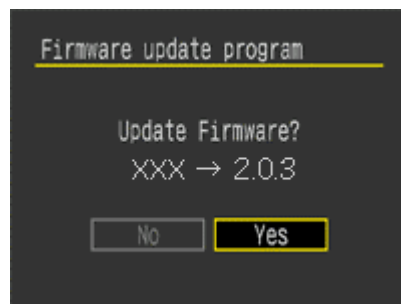
If the firmware update screen does not appear on the LCD monitor, the firmware update file may not have been properly copied to the CF card, so please try again starting from step (1).

Turn the Quick Control Dial, select OK, and then press the "SET" button.

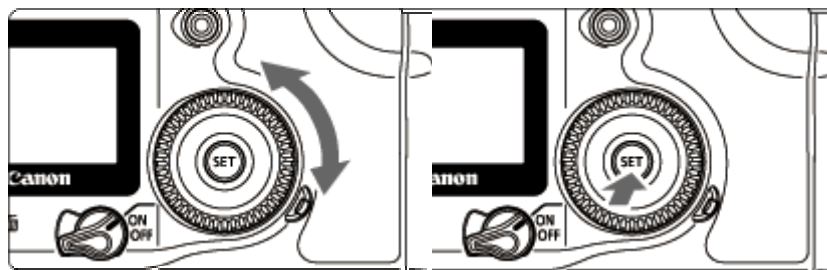
The following message will appear on LCD monitor, and the camera will check the version of its firmware. This process will take approximately six seconds.



After checking the current firmware, both the current and the replaced versions will be displayed on the LCD as follows.

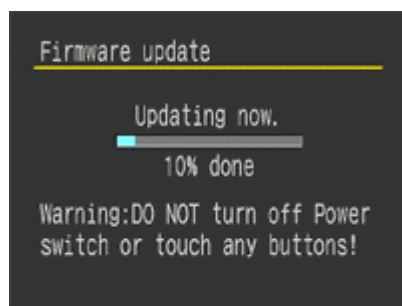


(4) Execute the firmware update after confirming the version to be installed, by selecting [Yes] with Quick Control Dial and pressing the "SET" button.



If you select [No] and press the "SET" button, the firmware update is cancelled.

The following message will appear during firmware updating.

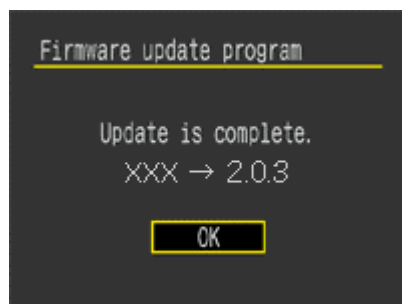


The update will take approximately 2 minutes.

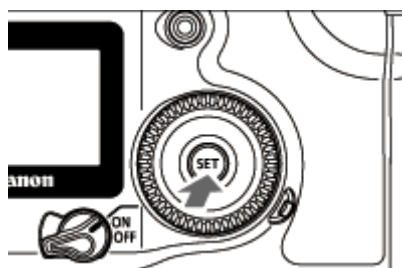
Do not turn the power off during the firmware writing operation.

Do not open the CF card slot cover or press any camera button during the firmware writing operation.

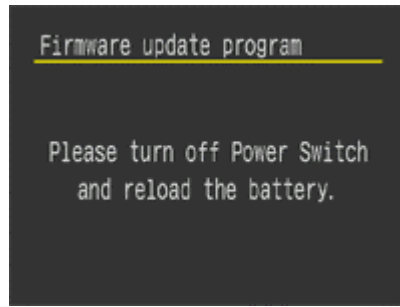
When the update is completed, the following message will appear on the LCD.



(5) Complete the firmware update by pressing the "SET" button.



(6) The following details appear on LCD monitor, so please turn the camera OFF.



The firmware update is now completed.

When the firmware update operations are finished, turn the camera off and remove battery from the camera for more than two seconds. This will cause the new firmware to effect after the battery has been reloaded and the camera is turn on.

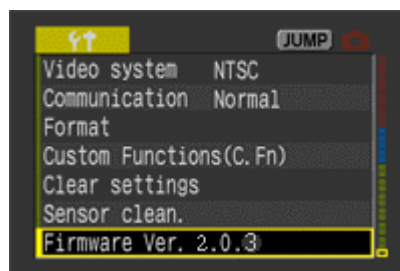
Format the CF card before using it again.

Verifying the firmware update

Turn the camera off and remove battery from the camera. Reloaded the battery and make sure the firmware version is 2.0.3. If so, the update has been completed properly.

To confirm the firmware version, turn the Main Switch ON, and press the MENU button to display the menu. Turn the Quick Control Dial, and you will see the "Firmware Ver.x.x.x" at the end of the settings shown in yellow, which is the number of the firmware version. For more details, please refer to the instruction manual at page 30 and 31.

Note: Select P mode (or one of the other creative modes). The version of the firmware will not appear in the basic modes.



If an ERROR message appears during the firmware update

In case the following message appears during the firmware update, please press the "SET" button and return to the beginning of the procedure. If you still have a problem, please contact the Canon Service Center in your region.

